

2625 - 2629 BROADWAY

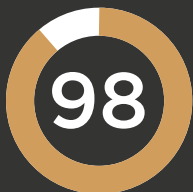
REDWOOD CITY, CALIFORNIA



2625 BROADWAY
VIRTUAL TOUR



2629 BROADWAY
WALKTHROUGH TOUR



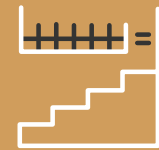
WALK SCORE
WALKERS PARADISE

STANDALONE CREATIVE
TECH OFFICE FOR LEASE IN
DOWNTOWN REDWOOD CITY

2625: ±11,973 RSF

2629: ±8,066 RSF

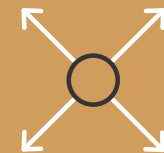
*CAN COMBINE FOR
±20,039 RSF*



OPEN MEZZANINE



PRIVATE ROOFTOP DECK



EXPANSION POTENTIAL

WWW.2625BROADWAY.COM



PROPERTY HIGHLIGHTS



2625 BROADWAY: ±11,973 RSF CREATIVE TECH OFFICE
- ±9,793 RSF Main Floor
- ±1,275 RSF Mezzanine
- ±725 RSF Private Rooftop Deck
- ±180 RSF Patio



2629 BROADWAY: ±8,066 SF
AVAILABLE MAY 1, 2023



VACANT AND READY FOR OCCUPANCY



FULLY FURNISHED + READY FOR OCCUPANCY
(INCLUDES 60 BENCHING STATIONS) WITH
HIGH END FURNITURE & FIBER



TECH BUILD-OUT WITH EXPOSED CEILING,
POLISHED CONCRETE FLOORS &
NATURAL WOOD



RARE DOWNTOWN ROOFTOP DECK



EXCELLENT LOCAL OWNERSHIP
AND FLEXIBLE LEASE TERM



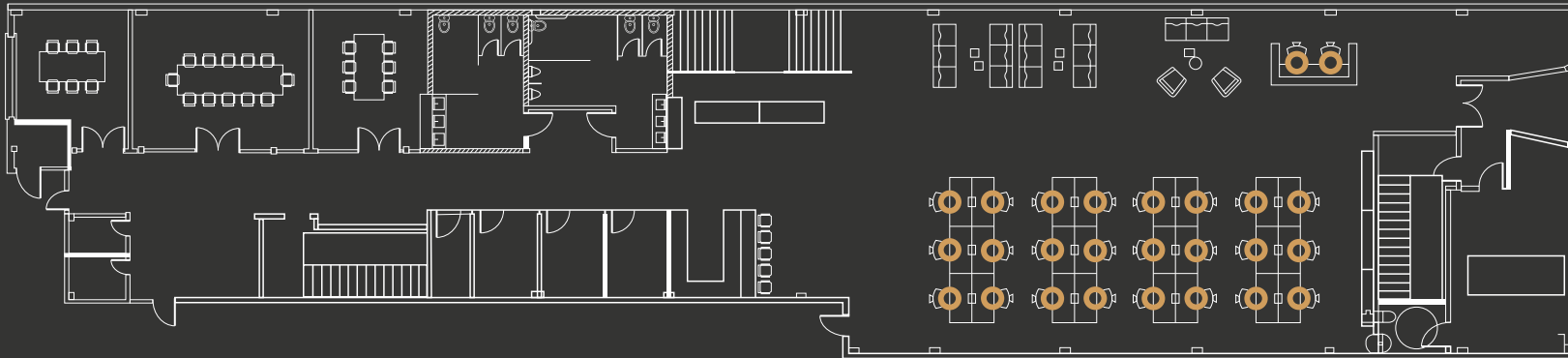
LOCATED 450 FEET FROM BABY
BULLET CALTRAIN STOP & COUNTLESS
WALKABLE AMENITIES



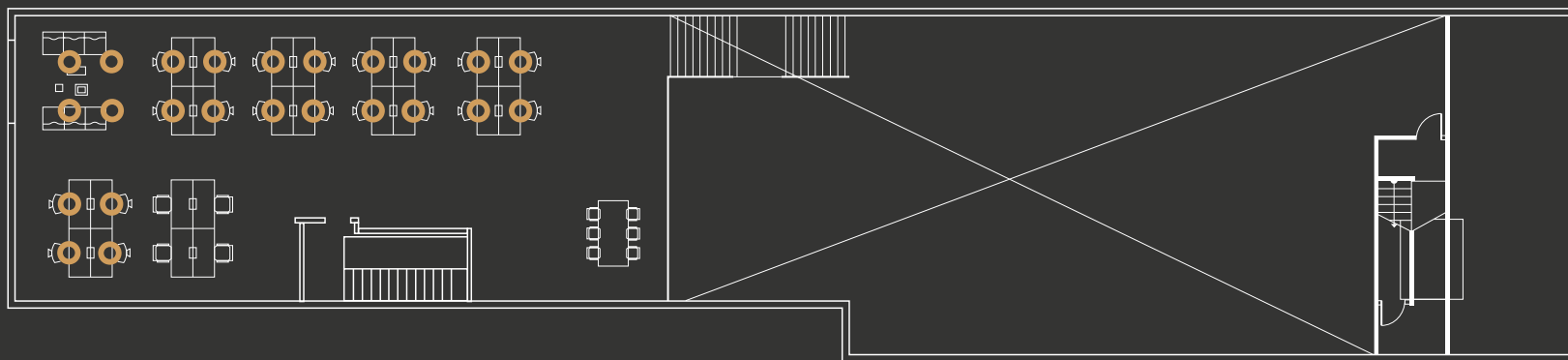
2625 FLOOR PLANS

- ±11,973 RSF
- 2 PRIVATE OFFICES/CONFERENCE ROOMS
- 1 BOARDROOM
- 3 PHONE ROOMS
- KITCHENETTE
- SERVER ROOM
- PRIVATE ROOFTOP DECK

FIRST FLOOR



SECOND FLOOR



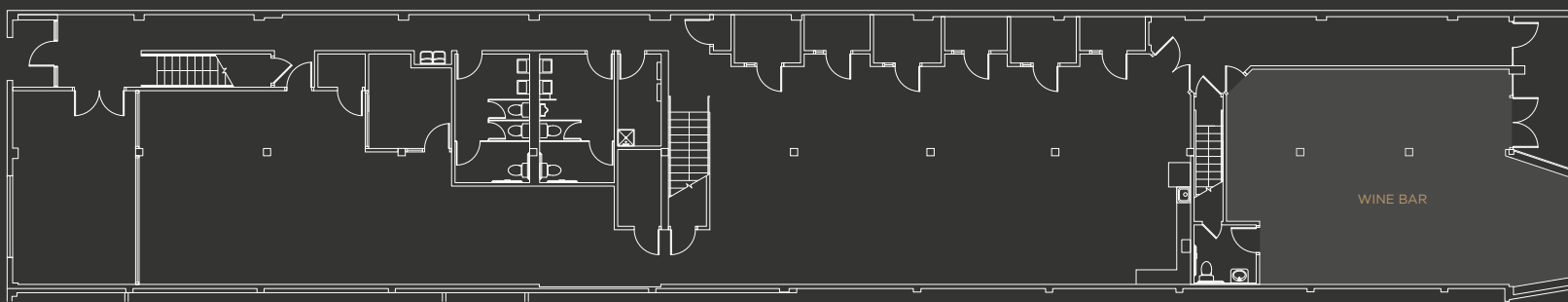
TAKE THE VIRTUAL TOUR



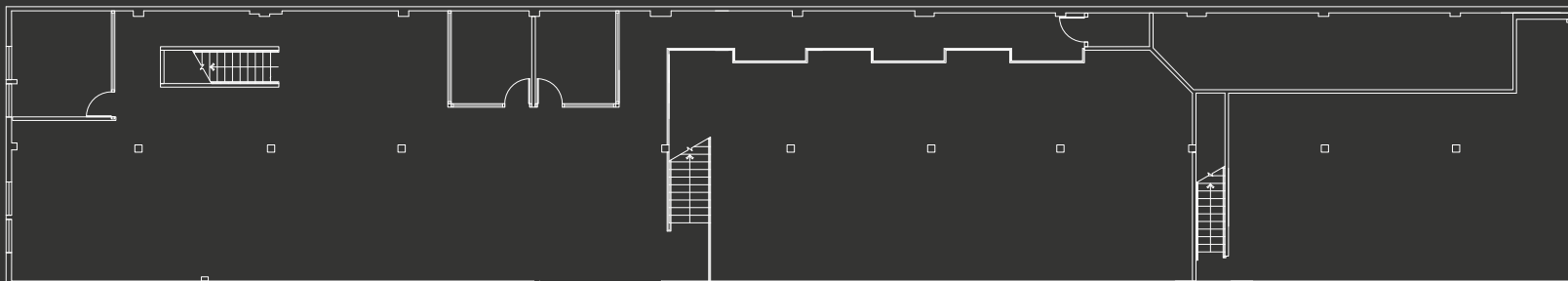
2629 FLOOR PLANS

- ±8,066 RSF
- 4 PRIVATE OFFICES/CONFERENCE ROOMS
- 1 BOARDROOM
- 6 PHONE ROOMS
- KITCHENETTE
- IT ROOM

FIRST FLOOR



SECOND FLOOR

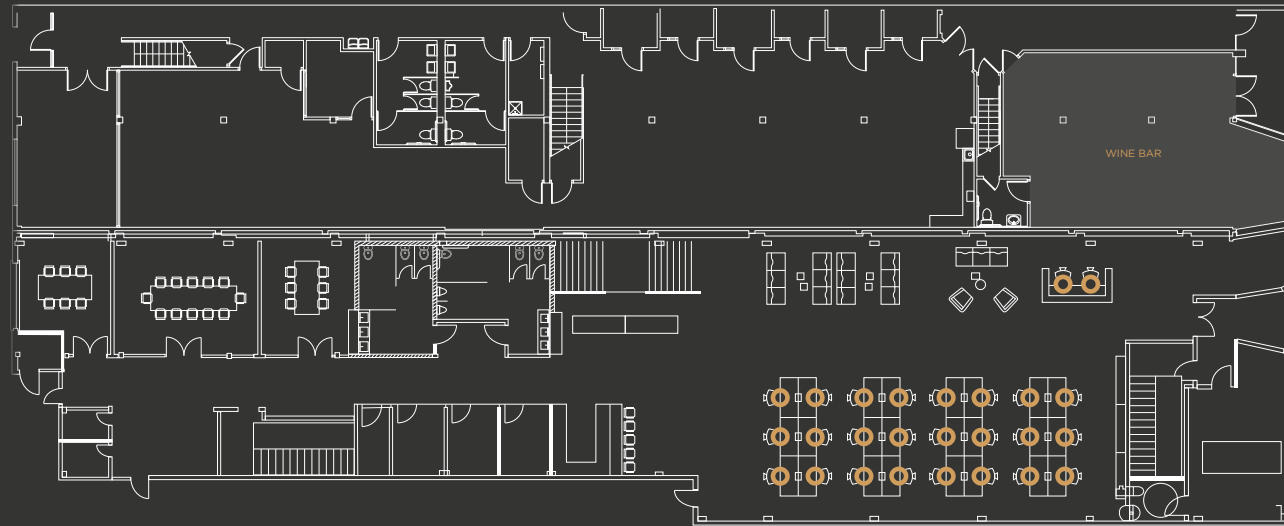


WALKTHROUGH TOUR

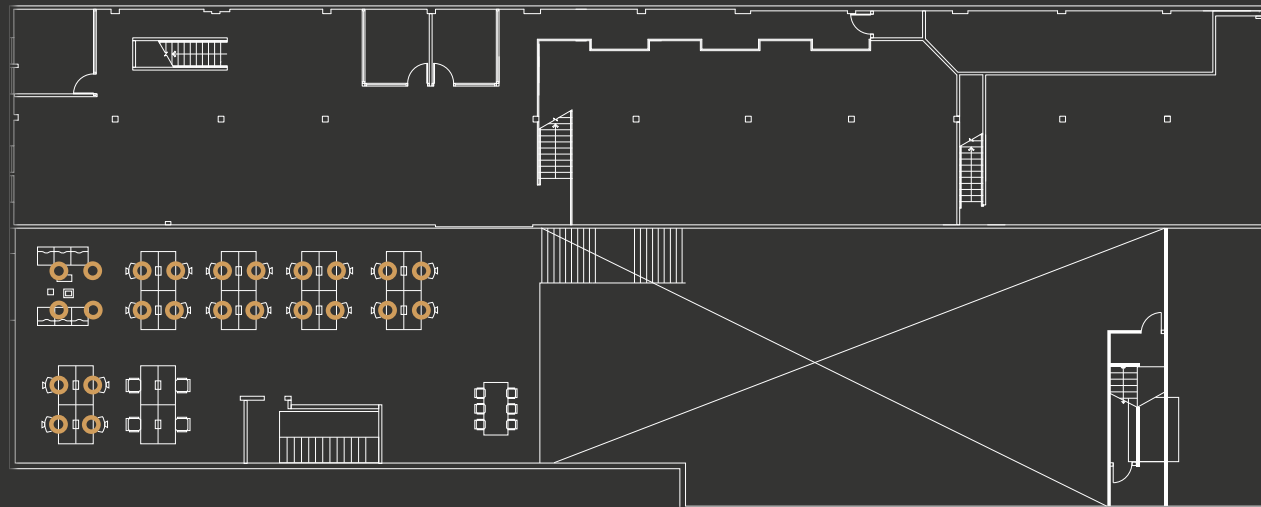


2625 & 2629 COMBINED FLOOR PLANS ±20,039 RSF

FIRST FLOOR



SECOND FLOOR





2625 BROADWAY



2629 BROADWAY



NEARBY AMENITIES

JUST STEPS FROM THE REDWOOD CITY CALTRAIN STATION.
IMMEDIATE ACCESS TO DOWNTOWN REDWOOD CITY'S VIBRANT AMENITIES.

RESTAURANTS

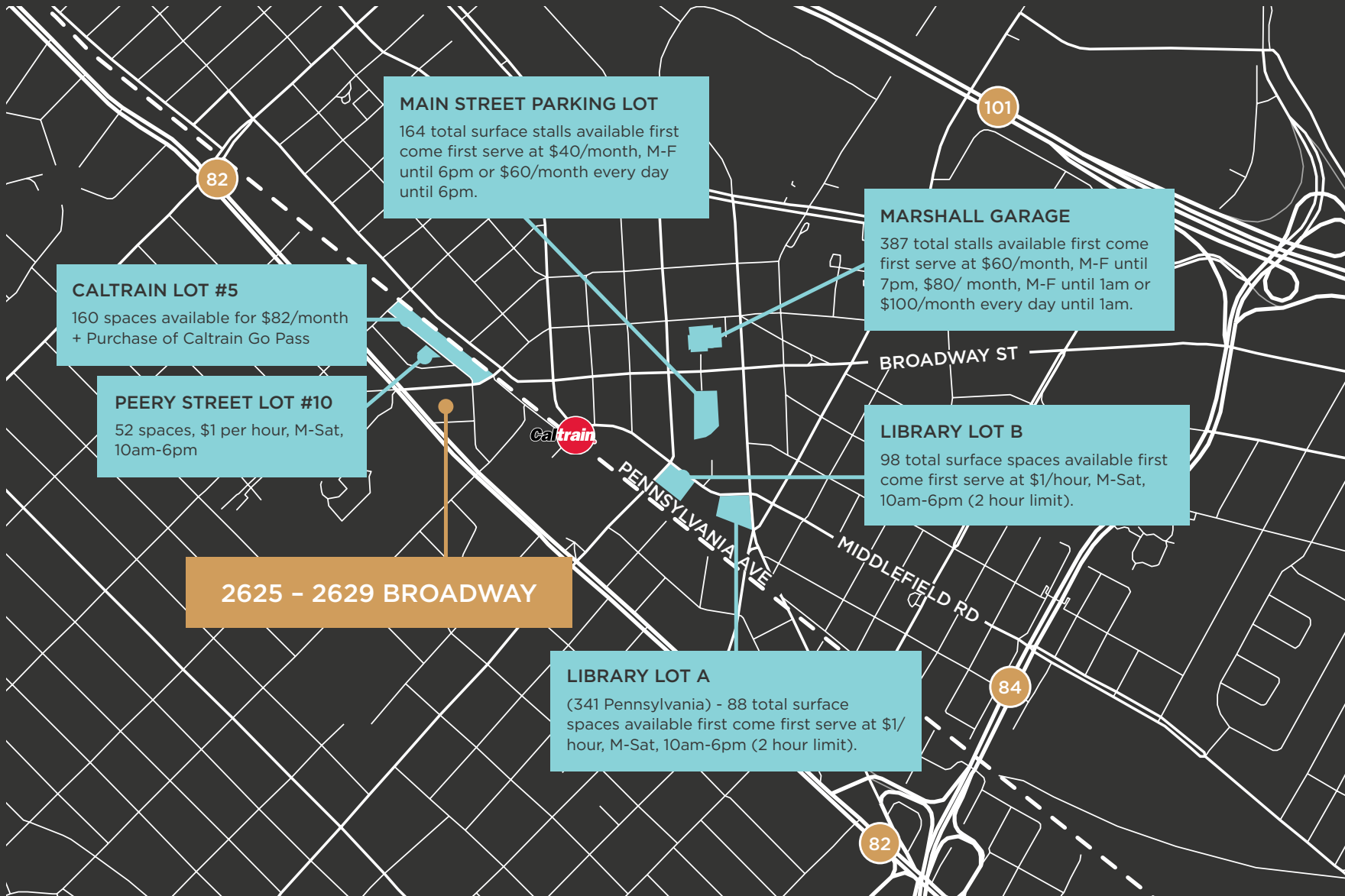
- | | |
|----------------------------------------------------|----------------------------|
| 1. Orenchi Ramen | 15. Margaritas |
| 2. The Sandwich Spot | 16. Talk of Broadway |
| 3. Broadway Masala | 17. May's |
| 4. Go Fish Poke Bar | 18. Pasha Mediterranean |
| 5. Quinto Sol | 19. Yokohama |
| 6. Curry Pizza House/
Old Port Lobster Shack | 20. LV MAR/Nick the Greek |
| 7. Sakura Teppanyaki Sushi | 21. Vino Santo Bistro |
| 8. Five Guy's | 22. Vesta |
| 9. Pizza My Heart | 23. Venga Empanadas |
| 10. Vitality Bowls | 24. Alhambra Irish House |
| 11. Hella Mediterranean/
West Park Farm and Sea | 25. La Victoria Taqueria |
| 12. Portabello Grill | 26. Angelicas |
| 13. Timber & Salt | 27. The Patty Shack |
| 14. Arya Steakhouse | 28. Milagros Latin Kitchen |
| | 29. Donato Enoteca |

COFFEE

- | | |
|-------------------------|--------------------------------------|
| 1. Peet's Coffee | 10. Bobalicious |
| 2. Red Giant Coffee | 11. Froyola Premium
Frozen Yogurt |
| 3. Mademoiselle Colette | 12. Philz Coffee |
| 4. Teaspoon | 13. Revere Coffee & Tea |
| 5. CRU | 14. The Blacksmith |
| 6. Joe & The Juice | 15. The Nighthawk |
| 7. Café La Tartine | 16. Coupa Cafe |
| 8. Cyclismo Cafe | |
| 9. Starbucks Reserve | |



NEARBY PARKING



2625 - 2629 BROADWAY

REDWOOD CITY, CALIFORNIA

FOR MORE INFORMATION, PLEASE CONTACT:

CHRIS BLOM

Director

+1 650 931 2210

Lic #02031205

BEN PAUL

Vice Chairman

+1 650 867 9639

Lic #01210872

RYAN PEGNIM

Principal

+1 650 346 9820

Lic #01478696



[VIEW SITE-SPECIFIC COVID-19 PREVENTION PLAN](#)

WWW.2625BROADWAY.COM

©2021 Cushman & Wakefield. All rights reserved. The information contained in this communication is strictly confidential. This information has been obtained from sources believed to be reliable but has not been verified. NO WARRANTY OR REPRESENTATION, EXPRESS OR IMPLIED, IS MADE AS TO THE CONDITION OF THE PROPERTY (OR PROPERTIES) REFERENCED HEREIN OR AS TO THE ACCURACY OR COMPLETENESS OF THE INFORMATION CONTAINED HEREIN, AND SAME IS SUBMITTED SUBJECT TO ERRORS, OMISSIONS, CHANGE OF PRICE, RENTAL OR OTHER CONDITIONS, WITHDRAWAL WITHOUT NOTICE, AND TO ANY SPECIAL LISTING CONDITIONS IMPOSED BY THE PROPERTY OWNER(S). ANY PROJECTIONS, OPINIONS OR ESTIMATES ARE SUBJECT TO UNCERTAINTY AND DO NOT SIGNIFY CURRENT OR FUTURE PROPERTY PERFORMANCE. COE-PM_West

